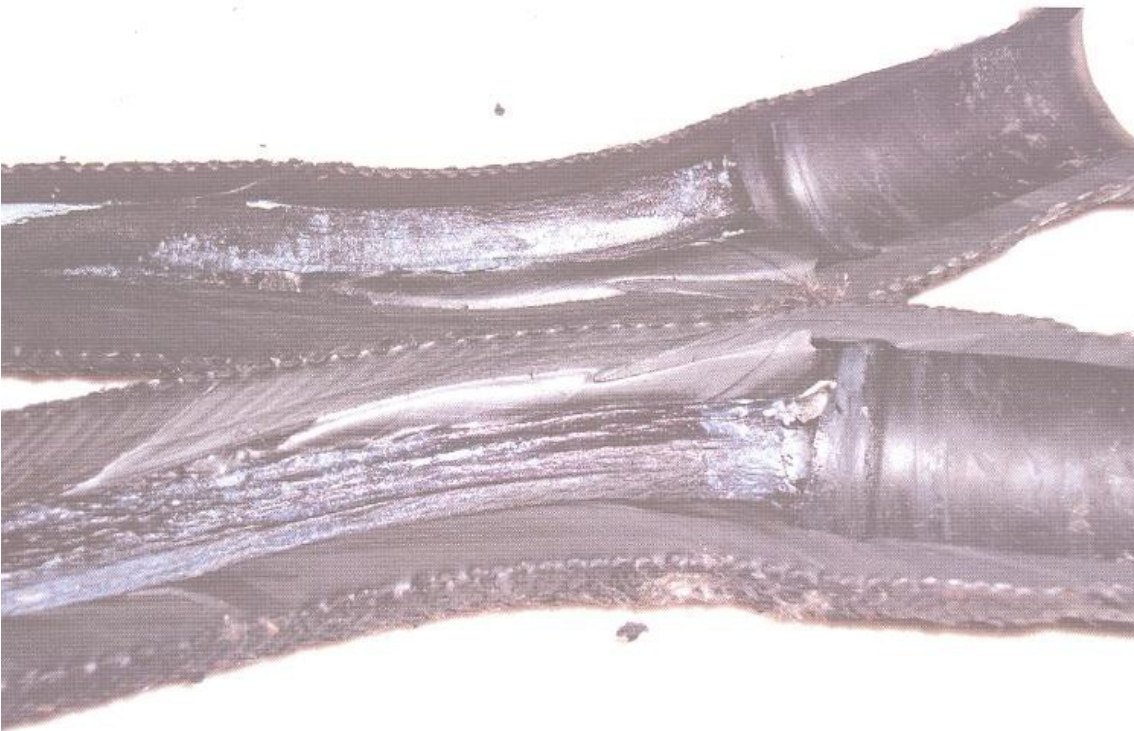


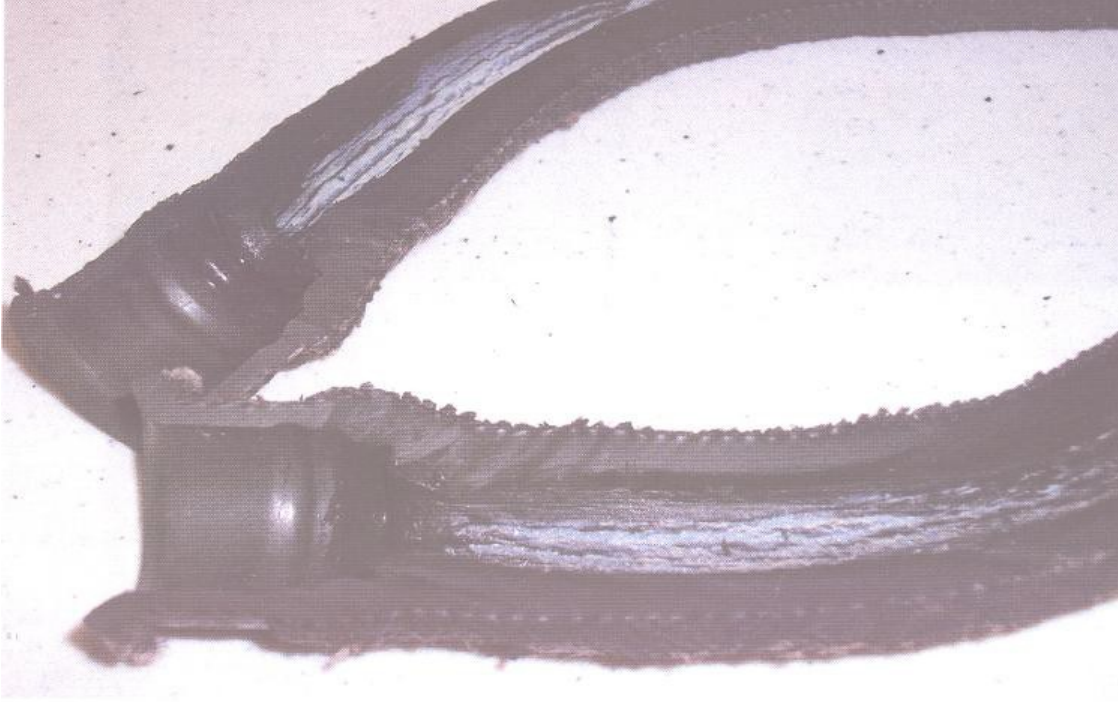
## Cessna 208B, Collapsed Engine Vent Line (2) ATA 7261

A general aviation submission states, "In compliance with a fleet campaign directive, and during an engine inspection, a mechanic checking the vent line of the overboard breather found the rubber section swollen internally. Left unchecked, an obstruction would cause the Pratt & Whitney PT6-114 engine of this (*aircraft*) to start consuming large amounts of engine oil—compromising the engine bearing seals and resulting in expensive engine repairs. The fleet campaign directive mentioned above was generated by this Caravan operator to address the condition of these aging hose sections. Operators of older Caravans would be wise to check their aircraft for similar defects."





**Cessna 208B, Collapsed Engine Vent Line (2) ATA 7261**



Part Total Time: (Unknown)